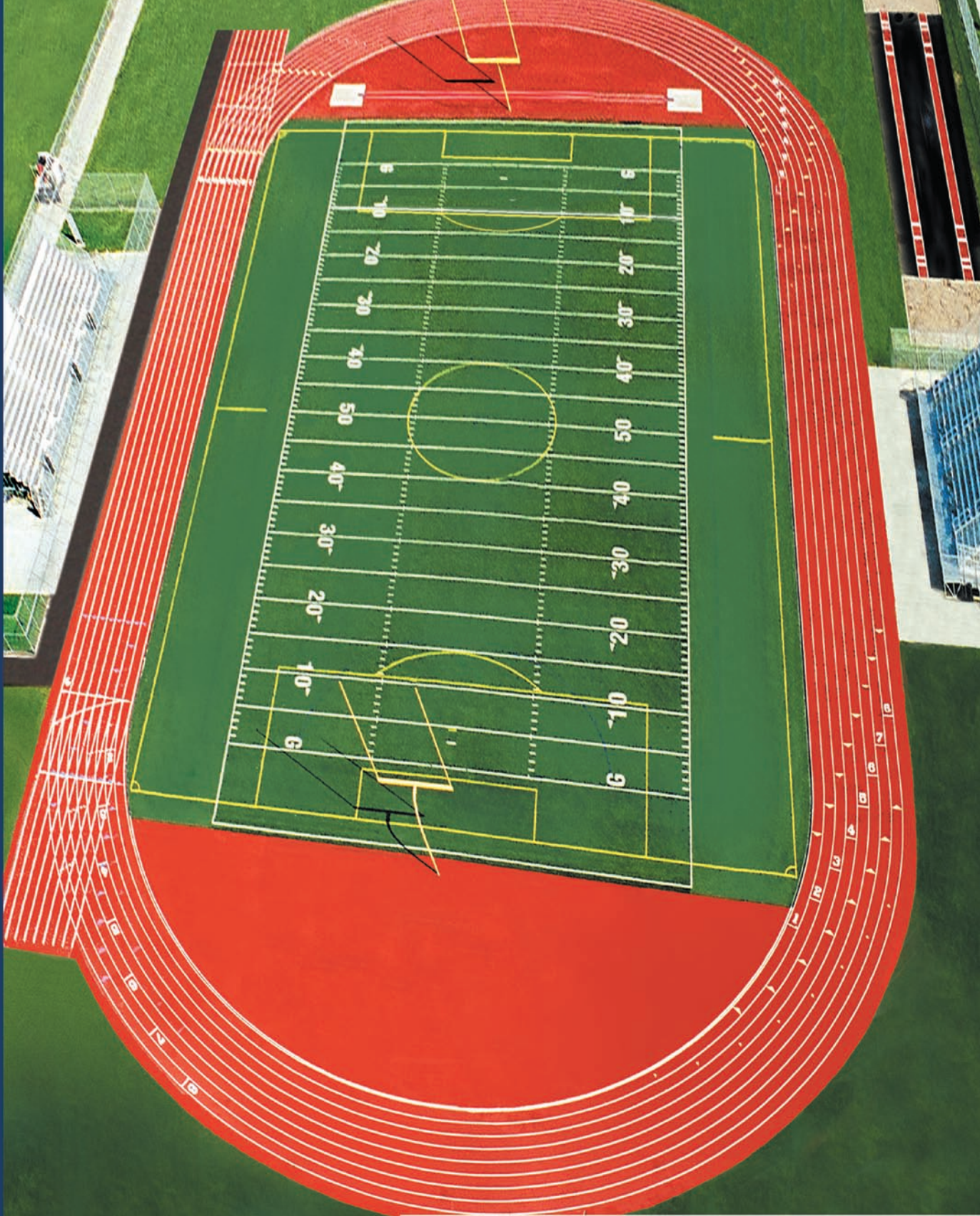
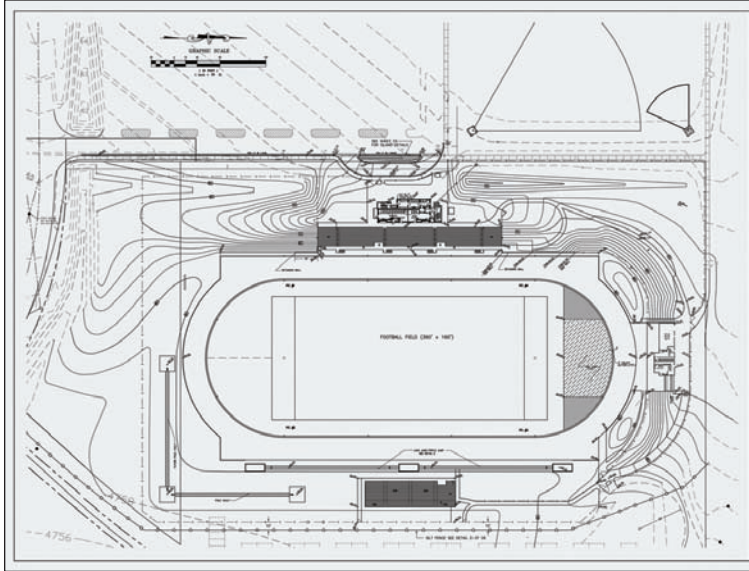


# running tracks



**LERenner**  
SPORTS SURFACES

*quality • integrity • service*



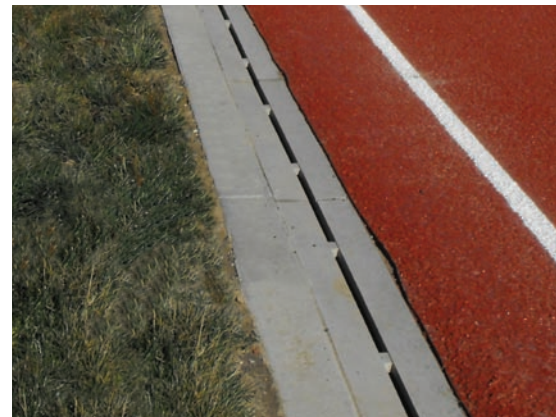
## consultation and design

Planning and design for the site is of vital importance to the performance and functionality of the facility. A site inspection, soils investigation and a meeting with all interested parties will constitute the first step in this process to identify the needs of the owner and of the site. From this, a CAD-generated drawing of the facility will be prepared.

The soils investigation will recommend procedures to maximize the longevity of the asphalt paving. As asphalt is generally prone to cracking within a relatively short period of time, consideration may be given to a concrete substrate to maximize the lifecycle of the rubberized surface.

- **Specializing in design/build and turnkey projects**
- **Certified Track Builder on staff**
- **Knowledge of governing body rules**
- **Expertise in site evaluation**
- **Drainage systems**
- **Complete infrastructure for synthetic turf fields, including drainage and laser-graded base**
- **Paving with asphalt or post-tensioned concrete**
- **Surfacing with a full range of latex or polyurethane systems**
- **Professional striping and custom markings**
- **Accessories and equipment**

## the running track construction process



**Renner Sports Surfaces uses only the highest quality materials installed by experienced craftsmen to provide performance for the athlete, affordability for the administrator and longevity with ease of maintenance.**

## **1. site work construction**

Site work preparation to provide a stable base may include site clearing and earth work per the recommendations of the Geotechnical Engineer. For synthetic turf fields, Renner Sports Surfaces can provide the recommended drainage structure and laser-graded base for any synthetic turf the owner may desire.

## **2. drainage**

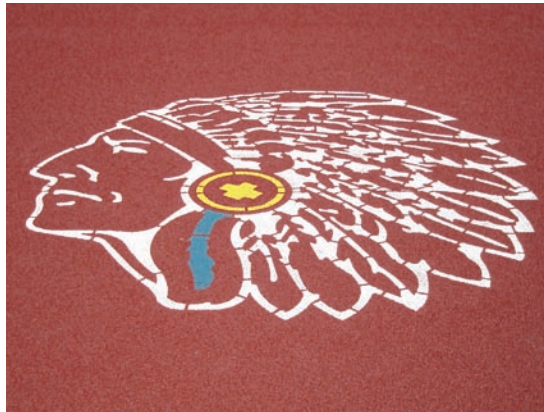
Proper drainage is one of the most important elements of a running track facility. The installation of a continuous interior collection channel provides drainage for running track and field, laser controlled dimension and elevation control, and serves as an interior curb.

## **3. curbing**

Curbing provides a buffer between the running track and the surrounding area. It may be used on the outside perimeter of the track, the D-zone, or to edge asphalt event areas.

## **4. paving**

The track oval normally consists of an aggregate base course and hot mix asphalt or post-tensioned concrete as specified by a soils engineer. The paving is supervised by professionals to insure proper surface tolerance, slope, and grade.



## **5. surfacing**

Renner Sports Surfaces offers a full line of latex and polyurethane-bound running track surfaces. These are available in a variety of colors and can be customized according to budget and athletic performance requirements.

## **6. event areas/equipment**

Care should be taken to locate the event areas to provide effective meet management, ease of maintenance, and adequate spectator viewing. Where space is available, it is optimum to locate as many of the events within the track oval as possible to facilitate this. These events and equipment include shot and discus throwing events, long jump and pole vault, high jump and steeplechase.

## **7. professional striping**

A CAD system diagram of all markings is produced from computer generated calculations. The markings and stripes are then applied by experienced professionals to conform to the requirements of the appropriate governing body.

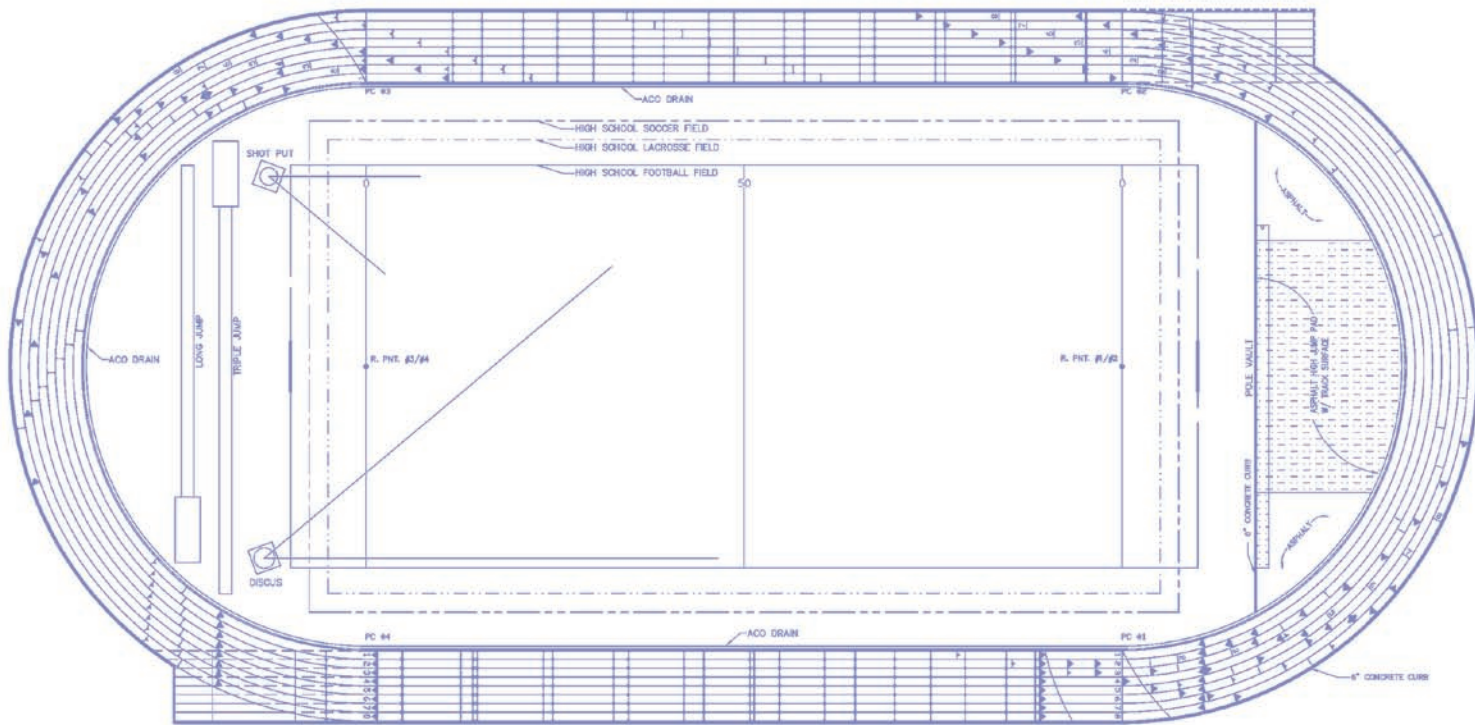
## **8. custom graphics**

Logos, custom colors, and lettering are available to individualize and distinguish your running track facility.

The construction or renovation of a running track requires consideration of the many elements that comprise the entire track and field facility. Renner Sports Surfaces has the personnel and expertise to evaluate the site and work with the owner to insure that the project will produce a facility that provides performance for the athlete, value for the owner and longevity with ease of maintenance.

**ITEMS TO BE CONSIDERED:**

- Size and elevation of available site
- Type of soils
- Subsurface site conditions
- Sports to be played on the field
- Level of competition to be run on the track
- Drainage
- Raised or flush curb
- Number, size, and location of event areas
- Safety zone
- Type of synthetic surface
- Finish line location
- Number of lanes
- Lighting, bleachers, fencing
- Maintenance



**TENNIS COURTS, RUNNING TRACKS, BASKETBALL COURTS, IN-LINE HOCKEY RINKS**

775 Canosa Court • Denver, Colorado 80204 [www.rennersports.com](http://www.rennersports.com)  
**303.825.3435 800.738.8106 fax 303.825.3439**